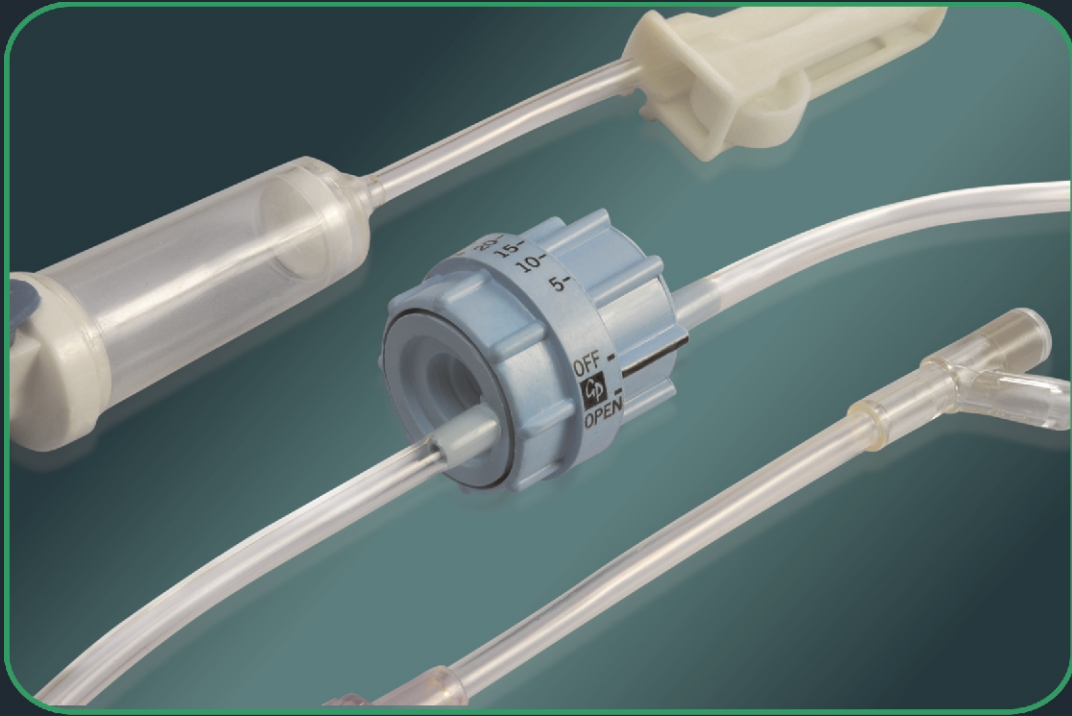


GENERIC NAME	BRAND	USES
I. V. Flow Regulator	DRIP CONTROL	To accurately control & regulate the flow of I. V. Fluids



FEATURES	BENEFITS
3 component construction	<ul style="list-style-type: none"> ■ In this 3 component design, only the centre calibrating disc is rotated to give the desired flow rate. The proximal & distal parts remain stationary, thereby preventing twisting & kinking of the I. V. Line. ■ In all other 2 component designs, due to the absence of this central free calibrating disc, either the proximal or distal parts are rotated, thereby causing twisting & kinking of the I. V. Line. ■ 'Two handed' operations eliminates accidental tampering. ■ Multiple raised finger grip ridges ensures a firm grip during calibration & adjustment.
Simple Design	<ul style="list-style-type: none"> ■ Fixing & calibration adjustment can be done in a few minutes and requires no special training. ■ Constant flow rate with a flow range of 5 ml to 250 ml / hr.
Injection Port	<ul style="list-style-type: none"> ■ Injection site is made of Polysulfone (Latex Free). ■ Facilitates quick & aseptic injection of drugs close to the cannulation site.

MATERIAL SPECIFICATIONS	Body / Housing	ABS
	End Adaptors	Polycarbonate
	Extension Line	Polyvinylchloride
	Luer Caps	Polyethylene
TECHNICAL SPECIFICATIONS	Flow range	0 to 250 ml / hr.
	Total length	50 cm
	Pressure Stability	5 Bar Hydrostatic
	Tube ID / OD	2.60 / 4.10 mm
PRODUCT CODE & PACK DETAILS	GP/IT/06/01/XX-XX	DRIP CONTROL with 'Y' injection port
	GP/IT/06/02/XX-XX	DRIP CONTROL with 'I. V. Set'

